

# Maple Prent: Mac OS X v10.5 & seinni

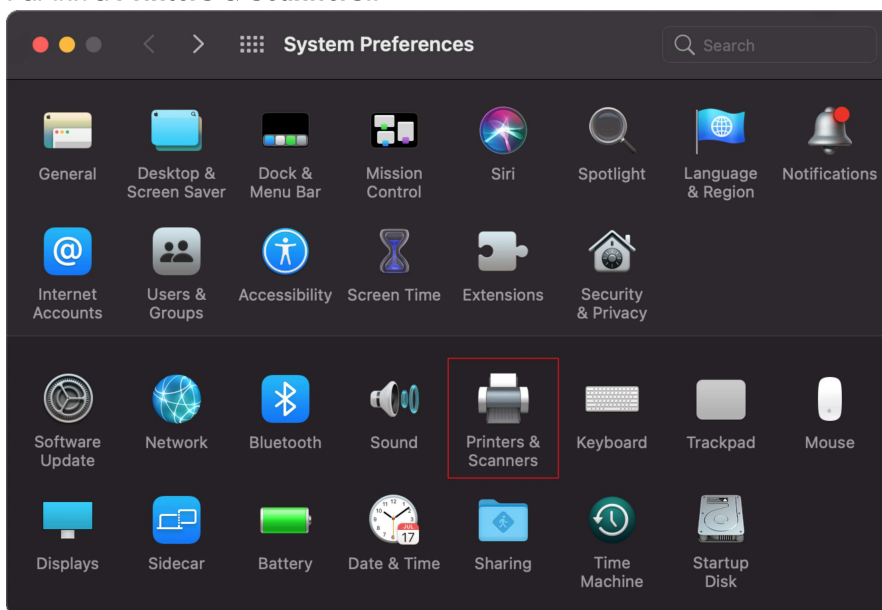
Modified on: Tue, 10 May, 2022 at 11:14 AM

## Mac OS X v10.5 og seinni

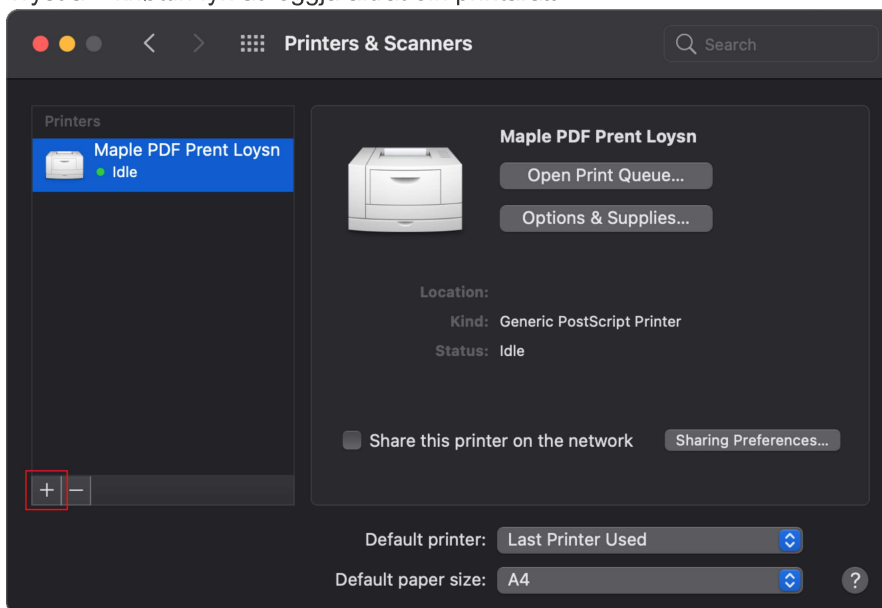
1. Vel **System Preferences** við at trýsta á **Apple**-ikonið..



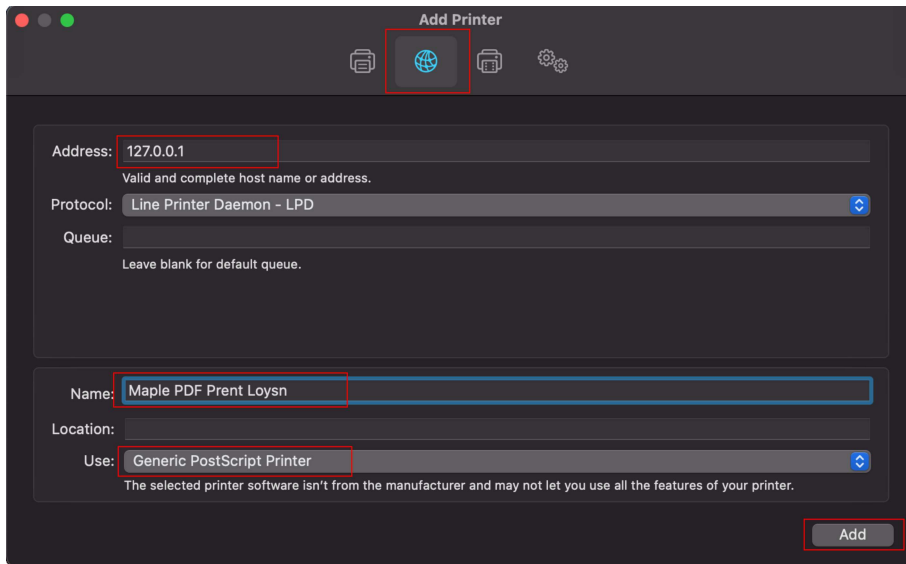
2. Far inn á **Printers & Scanners**..



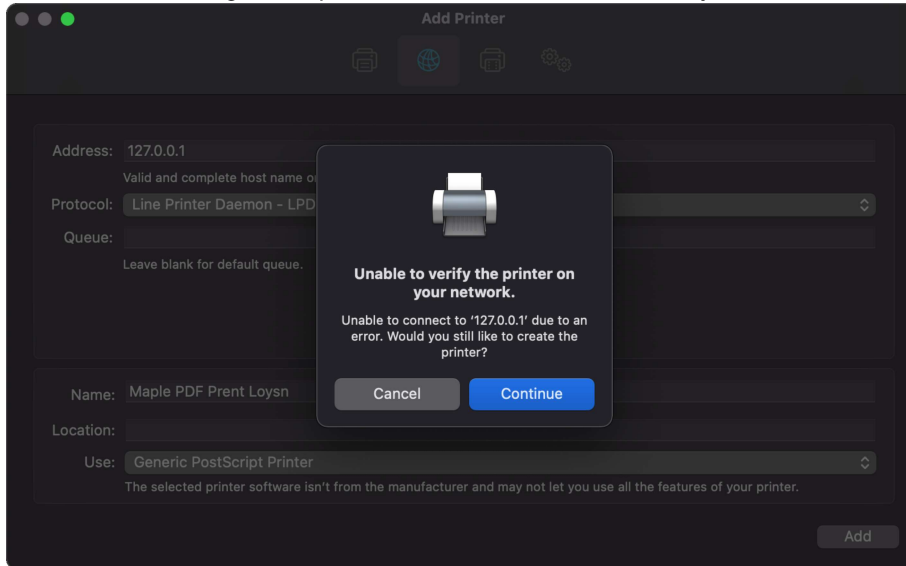
3. Trýst á + knöttin fyri at leggja aftrat ein printara..



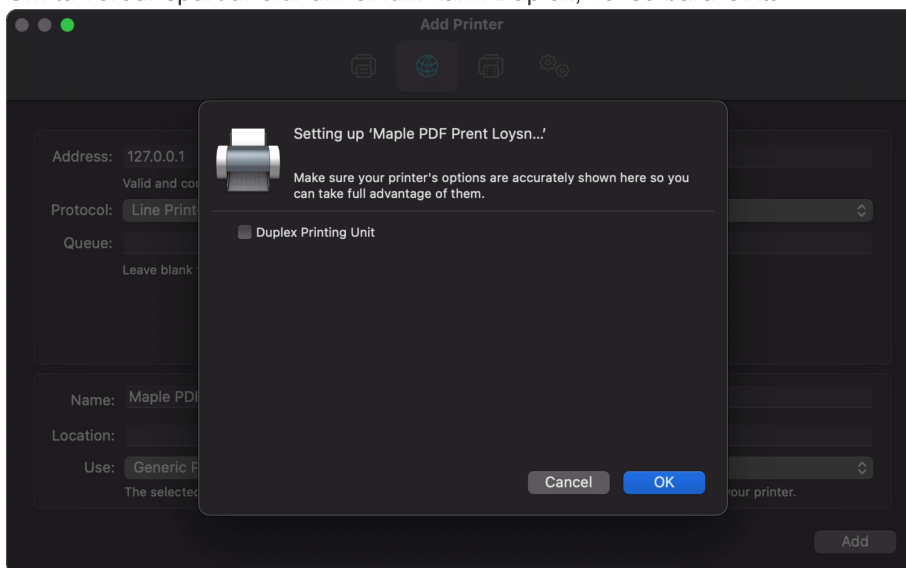
4. Vel Globus'in / IP á bjálkanum..



1. Tøppa inn eina "fiktiva" IP, t.d. **127.0.0.1**..
2. Gev tí einum heitið, ið er nemt at minnst..
3. Vel drivaran, **Generic PostScript Printer** & trýst á **Add**..
5. Tú færst eina ávaring um at prentarin ikki kann váttast.. Her trýstir tú bert á **Continue**..



6. Um tú verður spurður eftir um eindin kann Duplex, vel so bara **OK**..



7. Prentarin er nú klárur hjá t.d. Maple at brúka, so tú kanst biða um at fáa eitt PDF-prent..

Printers & Scanners

Printers

- Maple PDF Prent Loysn  
Idle, Last Used

Maple PDF Prent Loysn

Open Print Queue...

Options & Supplies...

Location:

Kind: Generic PostScript Printer

Status: Idle

Share this printer on the network

Sharing Preferences...

Default printer: Last Printer Used

Default paper size: A4

?